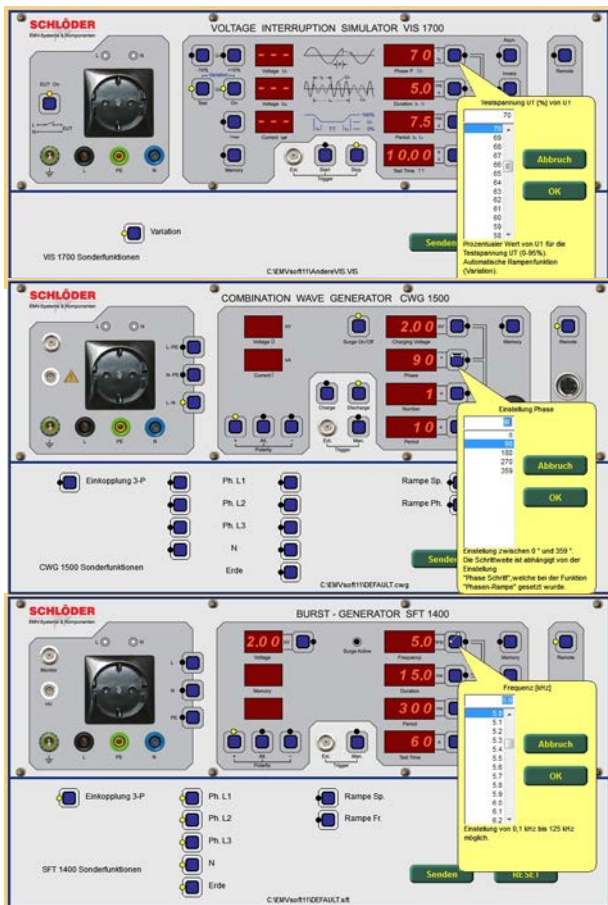


## Software for operation EMC - test generators (Schlöder generators)



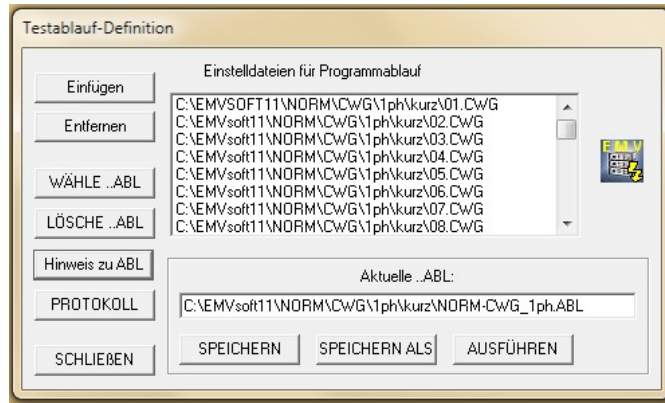
## EMC-Soft 11

The Microsoft-Windows (WIN98 /XP /2k /7) based software EMV-SOFT controls the Schlöder test generators via one interface cable. The "EMV-SOFT" includes the interface cable. The program EMV-SOFT controls the generators for BURST, SURGE, incl. 3 Phase coupling network and the Voltage interruption simulator (VIS). For a USB connection you need a USB-RS232 converter. For this purpose the software, up to 16 selectable COM ports are available.

All parameters which you can adjust directly at the test generators can be handled also with the software. Additionally you have the possibility to create ramp functions and device-specific test functions. With the sequential test-editor you can add several single programs to one multi test file to create complex test programs.

## Overview

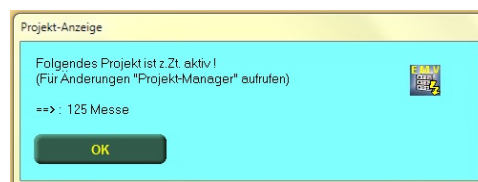
- Create sequential files (batch test) by combining setting files



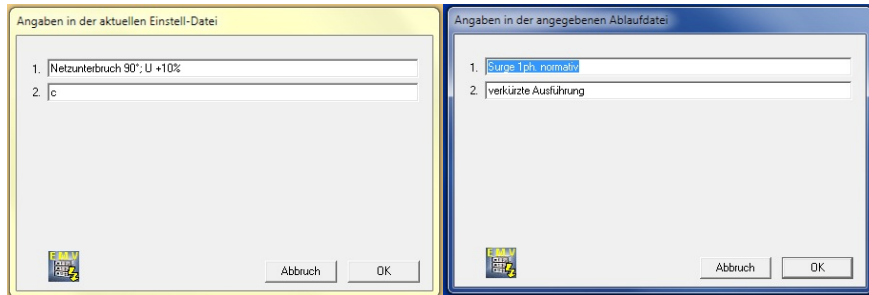
- Allows testing with ramp function of the voltage, phase, frequency or time, dependent of used generator.
- An integrated Editor for project information allows you to create and store individual headlines for your test logs.



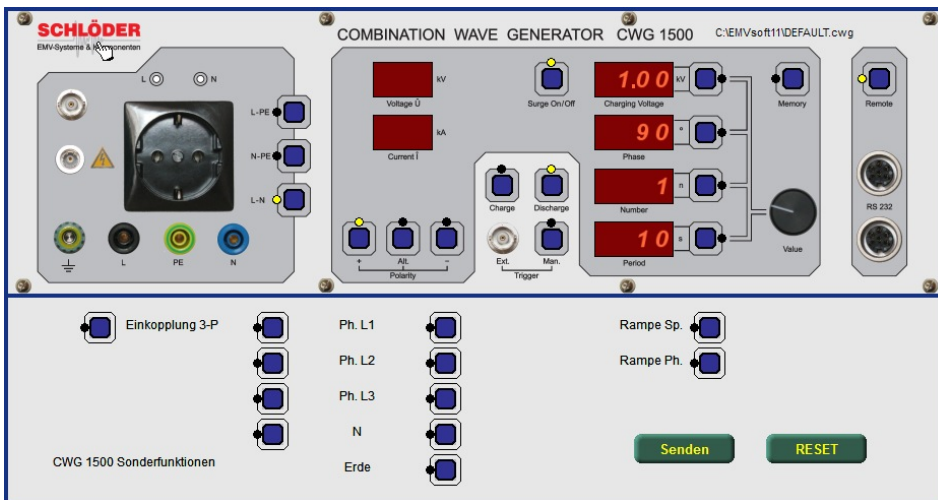
- The current project information is displayed each time you start the software (can disabled)



- Memo fields for parameter files (settings files) and sequential files will help you in the assignment regarding the use.




- Operation under real devices-views. The demo mode allowed an overview about the generator function - without connected test generators. Panel for special functions of each generator is automatically adjusted. Helpful in this case is the declaration of the function keys as soon as your mouse passes over it.



- Measurement data and project information is continuously in separately managed text tables (CSV) files updated. This data is available for further processing for external programs (e.g. MS Access) is available.

Below are two examples of the protocol-representation from the text tables:

## EMV Software 11



**SCHLÖDER**  
EMV-Systeme & Komponenten

---

Projekt Name: **924**  
 Projekt-Info: **Burstprüfung**  
 Kunde: **XYZ GmbH**  
 EUT: **Controller**  
 Beschreibung: **Siehe Zeichng. 12b**  
 Versorgungs Spg.: **230V 50Hz**  
 Betriebsart: **Leerlauf**  
 Prüfer: **RL**

Erfasst am: **28.01.2013**

---

Testdefinition: **+4000V, 1ph:L+N**

Test-Datei: **C:\EMVsoft11\NORM\SFT-Lv4\_LN.SFT**

Prüfgenerator: **SFT 1400**      Gehört zu Projekt: **924**


Püfung am: **29.01.2013 15:58:53**

Rampenfunktion: **Spannungsänderung**  
 STOP bei: **3000**  
 Spannungsrampe [V]: **2000**  
 -> : **3000**  
 Frequenz [kHz]: **5.0**  
 Burstperiode [ms]: **300**  
 Burstdauer [ms]: **15.00**  
 Rampenschritt [ms]: **500**  
 Prüfstatus: **Rampe beendet**  
 Polarität: **+/- (alternierend)**  
 Burst-Betriebsart: **Standard**  
 Einkopplung: **Netzwerk 1-phasig**  
 Koppelpfade: **PE N L**

Test Kommentar: **Kein Befund**

**Protokoll:**  
**BURST Test**

Dienstag, 29. Januar 2013



**SCHLÖDER**  
EMV-Systeme & Komponenten

---

Projekt Name: **924**  
Erfasst am: **28.01.2013**

C:\EMVsoft11\NORM\SFT\Level+-1bis4\_LN\_PE.ABL  
+/- 500V bis 4000V jeweils mit koppl. L+N bzw. nur PE

Projekt-Info: **Burstprüfung**  
Kunde: **XYZ GmbH**  
EUT: **Controller**  
Beschreibung: **Siehe Zeichng. 12b**  
Versorgungs Spg.: **230V 50Hz**  
Betriebsart: **Leerlauf**  
Prüfer: **RL**

---

Batch ID **227**      Prüfgenerator: **SFT 1400**

ID set no.	Test Spg. [V]	Freq [kHz]	Kopp. Pfade	Dauer [msec]	Period [msec]	Test Zeit [sec]	Burst-mode	Kommentar	
1	+	500	5.0	N L	15.00	300	6	Standard	O.K.
2	-	500	5.0	N L	15.00	300	6	Standard	O.K.
3	+	500	5.0	PE	15.00	300	6	Standard	O.K.
4	-	500	5.0	PE	15.00	300	6	Standard	O.K.
5	+	1000	5.0	N L	15.00	300	6	Standard	O.K.
6	-	1000	5.0	N L	15.00	300	6	Standard	O.K.
7	+	1000	5.0	PE	15.00	300	6	Standard	O.K.
8	-	1000	5.0	PE	15.00	300	6	Standard	O.K.
9	+	2000	5.0	N L	15.00	300	6	Standard	O.K.
10	-	2000	5.0	N L	15.00	300	6	Standard	O.K.
11	+	2000	5.0	PE	15.00	300	6	Standard	O.K.
12	-	2000	5.0	PE	15.00	300	6	Standard	O.K.
13	+	4000	5.0	N L	15.00	300	6	Standard	O.K.
14	-	4000	5.0	N L	15.00	300	6	Standard	O.K.
15	+	4000	5.0	PE	15.00	300	6	Standard	O.K.
16	-	4000	5.0	PE	15.00	300	6	Standard	O.K.

Technische Änderungen vorbehalten

291301