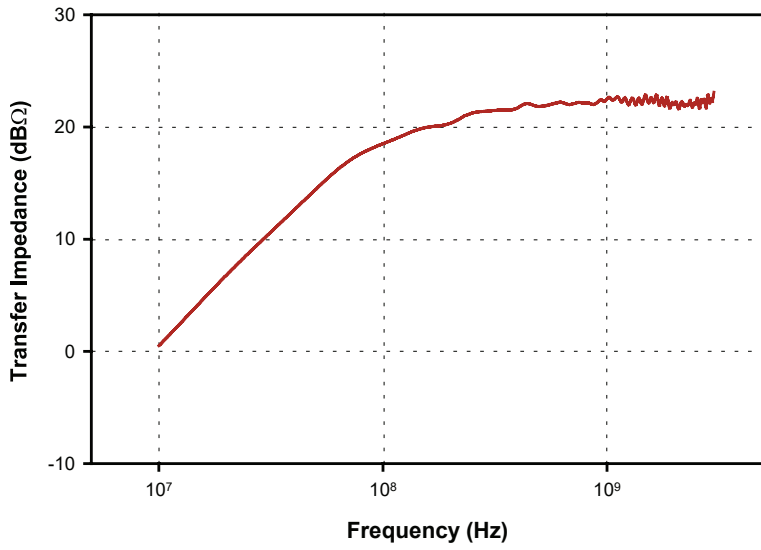
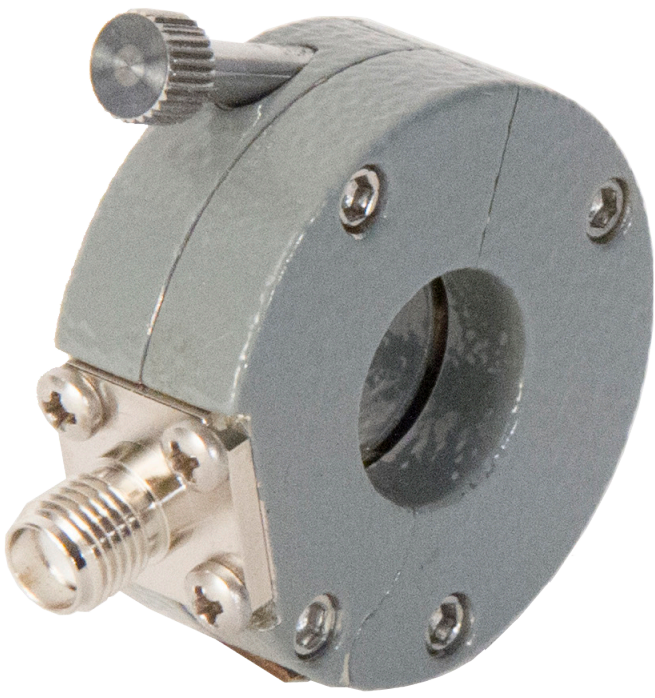


F - 2000-12mm

CURRENT PROBE

The F-2000-12mm is ideal for laboratory and field testing from 10 MHz to 3 GHz.



Specifications

- Frequency: 10 kHz – 3 GHz
- Internal diameter: 13 mm
- External diameter: 37 mm
- Height: 17 mm
- Z_tΩ¹: 16
- Connector: Type-SMA
- Max. Peak Current: 100 amperes
- Max. RMS Current: 100 amperes
- Drop Rate (%/microsec.):
- IT Max. (amp-sec):
- Useable Risetime
- Low Frequency 3 dB point: 100 MHz
- High Frequency 3 dB point: 3 GHz

1: Probe calibrated with 50 Ω + j0Ω Load Impedance.



Fischer Custom Communications, Inc.

19220 Normandie Ave., Unit B Torrance, CA 90502
Phone: 310-303-3300

Email: sales@fischercc.com

© Fischer Custom Communications, Inc.