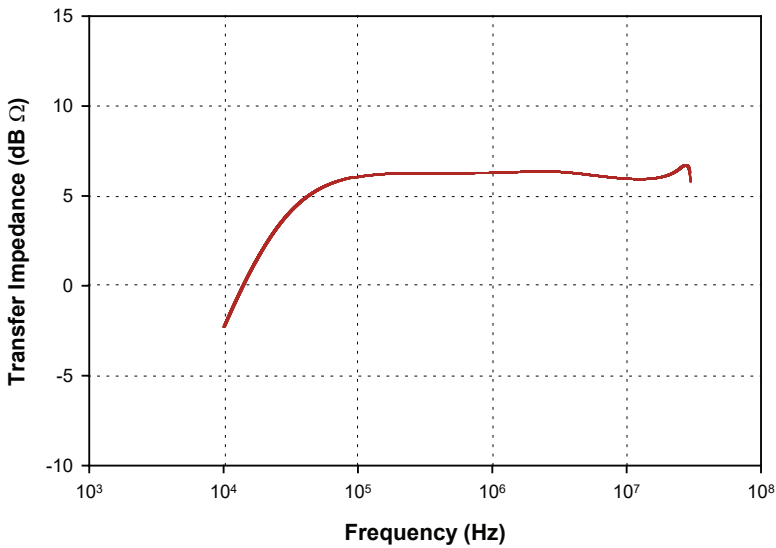
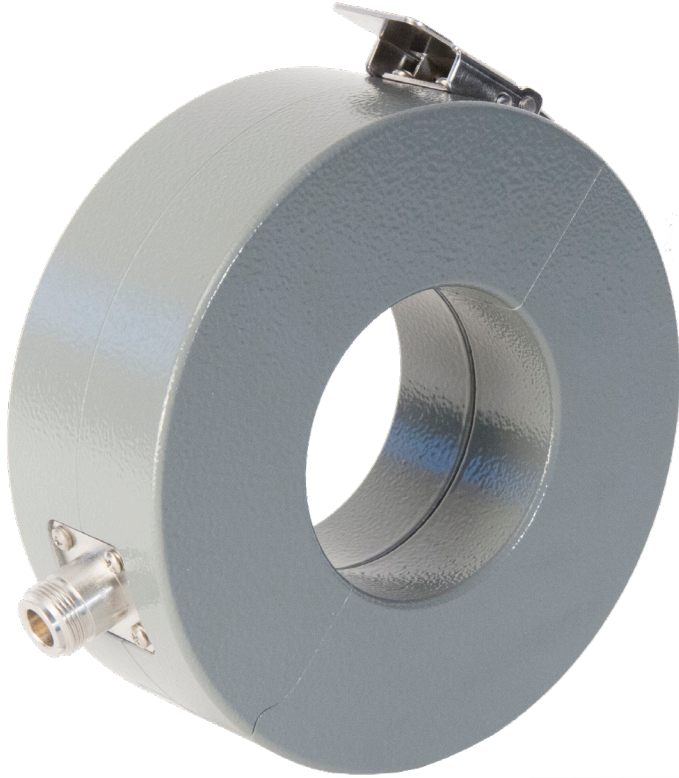


F - 170705-1005-1

CURRENT PROBE

The F-170705-1005-1 has a usable frequency range of 100 kHz – 30 MHz. Primary power currents of 750 amperes DC – 400 Hz and 100 amperes pulse will not alter the transfer impedance.



Specifications

Frequency:	100 kHz – 30 MHz
Internal diameter:	67 mm
External diameter:	142 mm
Height:	53 mm
ZtΩ ¹ :	2
dBΩ ¹ :	6
Connector:	Type-N
DC to 400 MHz:	750 amperes
RF(CW):	10 amperes
Peak Pulse Current ² :	100 amperes

1: Probe calibrated with 50 Ω + j0Ω Load Impedance.
2: Depends upon the pulse width and pulse rep. rate.



Fischer Custom Communications, Inc.

19220 Normandie Ave., Unit B Torrance, CA 90502
Phone: 310-303-3300

Email: sales@fischercc.com

© Fischer Custom Communications, Inc.