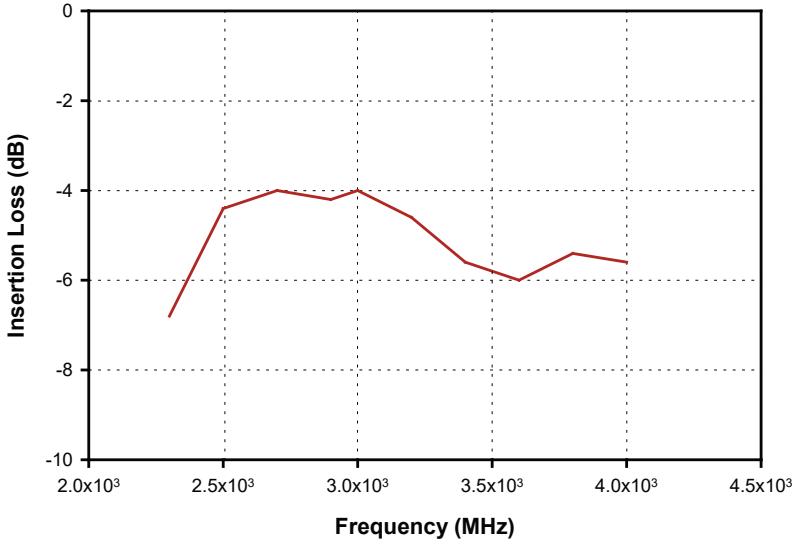
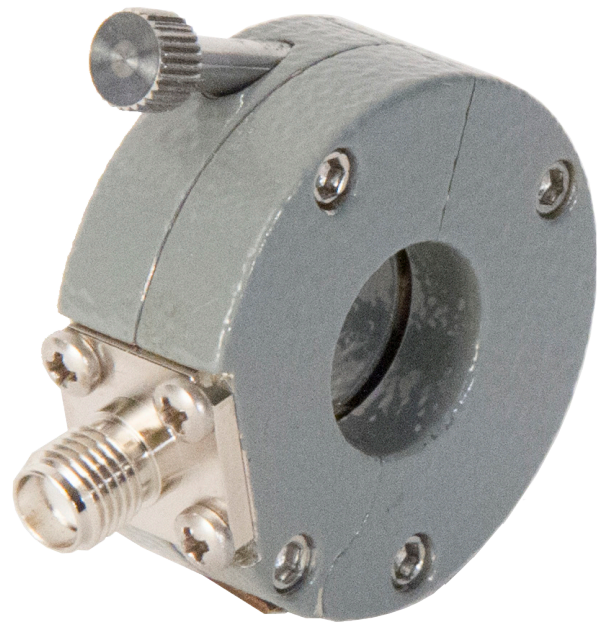


# F - 150-1

## BULK CURRENT INJECTION

The F-150-1 has been designed to extend the use of conducted immunity testing over the bandwidth of 2.3 – 7.0 GHz. Pursuing this effort, the F-150-1 combines high efficiency, high power rating, and compact size. This allows the device to be used in the testing of individual cable harnesses during benchtop testing as well as cable harnesses inside vehicles.

Per standard substitution methods used in ISO 1145-4/ISO 11452-4, Mil-Std. 461/462, and FAA DO-160. The F-150-1 requires 20 watts to develop up to 300 milliamperes into a calibration fixture with a 100 Ω loop line impedance.



### Specifications

Frequency: 2.3 GHz – 7.0 GHz  
Inner diameter: 12 mm  
Outer diameter: 33 mm  
Height: 13 mm  
Input Power rating: 250 watts (30 minutes)

### Accessories

FCC-BCICF-150-1 • Calibration Fixture  
Bandwidth: 1 GHz – 7.5 GHz  
F-070430-1005-1 • Current Probe  
Bandwidth: 1 GHz – 7.5 GHz



Fischer Custom Communications, Inc.

19220 Normandie Ave., Unit B Torrance, CA 90502  
Phone: 310-303-3300

Email: sales@fischercc.com

© Fischer Custom Communications, Inc.