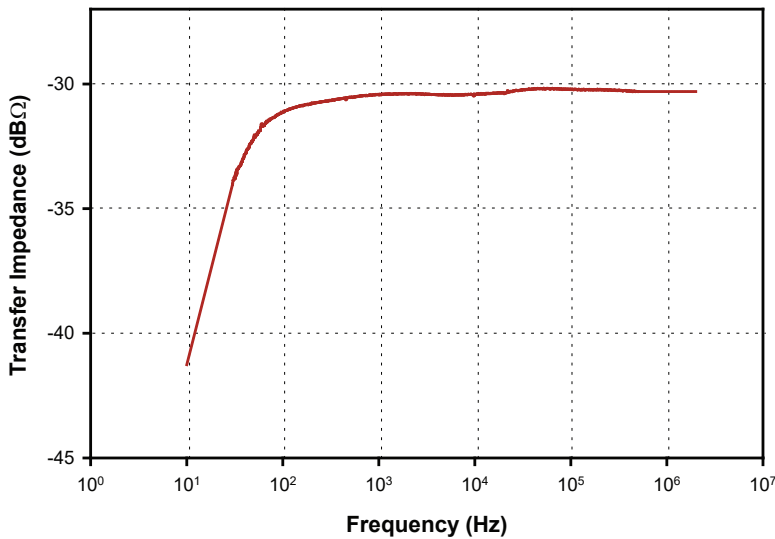
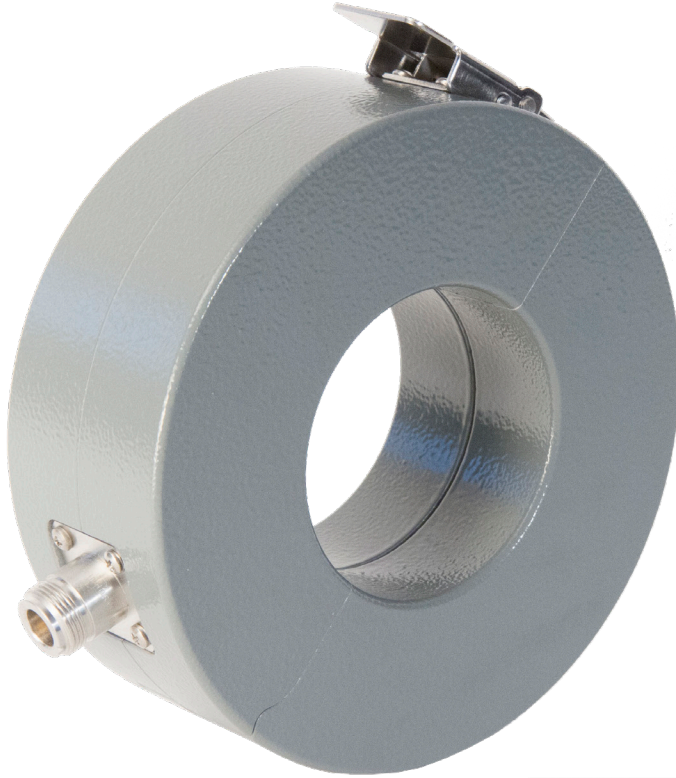


CURRENT PROBE

The F-14A measures currents on 50 Hz, 60 Hz, and 400 Hz power lines. Its useable frequency range is 10Hz to 500 kHz. The F-14A can operate up to 400 amperes of DC – 400 Hz without altering its transfer impedance.



Specifications

Frequency:	10 Hz – 500 kHz
Internal diameter:	67 mm
External diameter:	142 mm
Height:	53 mm
ZtΩ ¹ :	0.12
dBΩ ¹ :	-18.5
Connector:	Type-N
DC to 400 MHz:	400 amperes
RF(CW):	25 amperes
Peak Pulse Current ² :	500 amperes

1: Probe calibrated with 50 Ω + j0Ω Load Impedance.
2: Depends upon the pulse width and pulse rep. rate.